



One2Automate

by MeU Solutions

One2Automate

A Test Automation Solution for Desktop, Mobile and Web Applications

Test Automation Platform

One2Automate is an open framework with a set of features for functional automation testing. It supports for Web, Desktop and client-server applications. With One2Automate's intuitive GUI, QA Engineers who have no programming languages can quickly create and perform automated tests, freeing up more cycles for human-based testing. Therefore, you can be surprised when your manual test team is still able to create automation tests with only few days for training

In DevOps environment, One2Automate becomes a the most suitable solution for team using continuous integration and development with integration to popular 3rd party applications, source control, test management and CI tools

Key Features

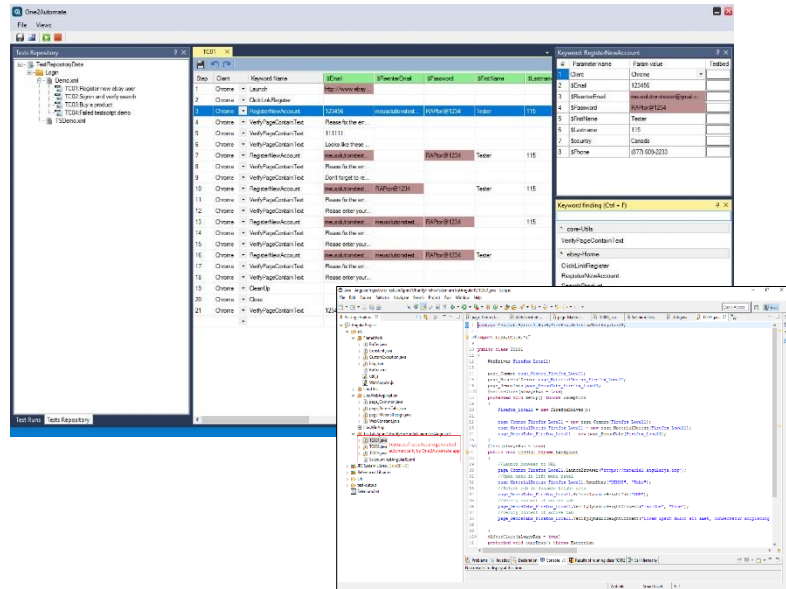
- ◆ Desktop & Web Testing & extendable for Mobile testing
- ◆ Keyword Driven Testing
- ◆ Multiple Language Support
- ◆ Interact-able with all automation tools/framework
- ◆ Cross-Browser Web Testing and Mobile Support
- ◆ Distributed Testing
- ◆ Data-Driven Testing
- ◆ Framework Independence
- ◆ Multiple Platforms

Keyword Driven Testing & Multiple Language Support

Regardless of your experience with automated test scripts and script management, One2Automate helps with intuitive features for newcomers and more advanced options for the seasoned tester.

You can easily create keyword-driven tests with visual feature and operation menu. For automation specialists who advance with programming skills and experience with automation tests, you can build your test scripts in multiple languages, allowing you to use the language that is most comfortable for you. Following are scripting languages:

- ◆ Java
- ◆ C++/ C#
- ◆ Python
- ◆ PHP
- ◆ Ruby

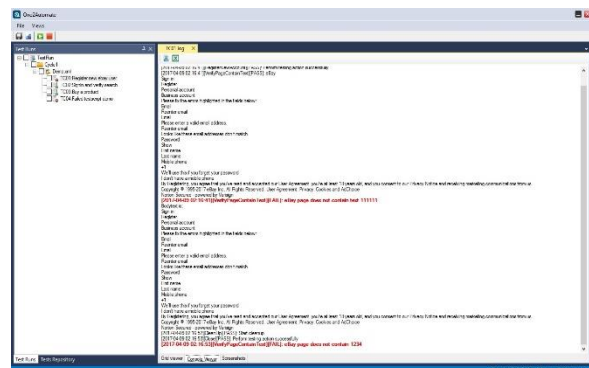


High Capability with 3rd Party Integration

One2Automate supports a wide range 3rd party controls and integration with agile and continuous integration build tools. For example: you can integrate One2Automate with Git or SVN for versioning your tests. Or integrate One2Automate with Defect Tracking Management Tools like JIRA to manage defects raised by automation tests

Easy to Diagnose your Automation Tests

During the automation test performance, all test results and activities are logged. Screenshots are captured to serve for the purpose of diagnosing the issues. With all logs, you will be easy to identify causes of test failures and effectively communicate them across teams. Or you can integrate One2Automate with other IDE like Eclipse to perform debugging for your automation tests.



Cross-Browser Testing and Mobile Support

A test script can work well in one Web browser, but it may not work in another. There is no need to write multiple scripts for multiple browsers; with one cross-browser test script you can test your application within multiple browsers.

Mobile Web applications can be tested within One2Automate. Currently, One2Automate is supporting Native and Mobile Web Applications

Framework Independence

One2Automate is built upon Selenium Web Driver and Appium. One2Automate allows to export all test scripts in a particular language that can be run with other IDEs like Visual Studio, Eclipse, Netbean, so all your test scripts will not depend on our framework architecture and advance your tests in DevOps environment.

Multiple Platform Support

- ◆ Microsoft® Windows® (32-/64-bit): Windows 8+8.1, Windows 7, Windows Vista, Windows XP; Windows Server 2012, 2008 and 2003, Team Foundation Server 2012
- ◆ .NET Framework 2.0 – 4.5
- ◆ .NET compilers from Microsoft, Embarcadero®, and other vendors (C#, VB.NET, Python .NET, COBOL.NET, Perl.NET, etc.)
- ◆ Microsoft Visual Studio® 2013, 2012, 2010, 2008, 2005 SP1, 2003, 2002
- ◆ Borland® Delphi 7, C++Builder 6 through Embarcadero
- ◆ Browsers: IE 7 – 10, Firefox 18 – 23, Chrome 22- 27, Safari 5, Opera 12
- ◆ Web 2.0: AJAX, HTML5, Apache Flex up to 4.9, Adobe® Flash 10 and later, AIR 3 and 2, and Microsoft Silverlight 5 and 4
- ◆ Java Runtime Environments (JRE) 1.5 – 1.7
- ◆ Android 4.x
- ◆ Microsoft WPF and MFC, JavaFX2, Qt 4 - 5, extJS 4
- ◆ JIRA 6.0, 5.2, 5.0; OnTime 2013 and 2012, Bugzilla, QAComplete